

ANNIE HSIAO-WEN WANG

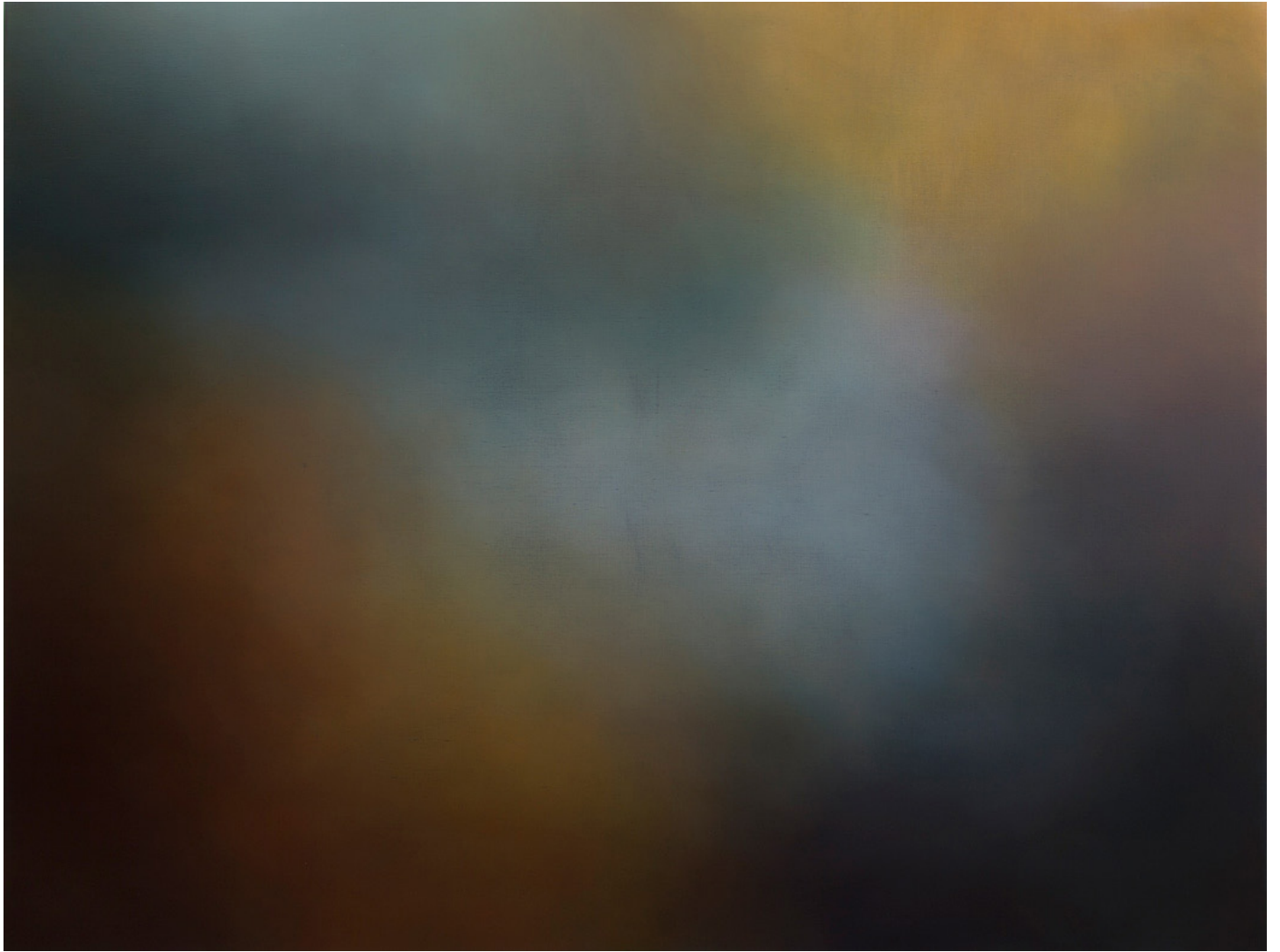
**Somnium**

27 August - 28 September 2014  
Opening Saturday 6 September 3-5pm





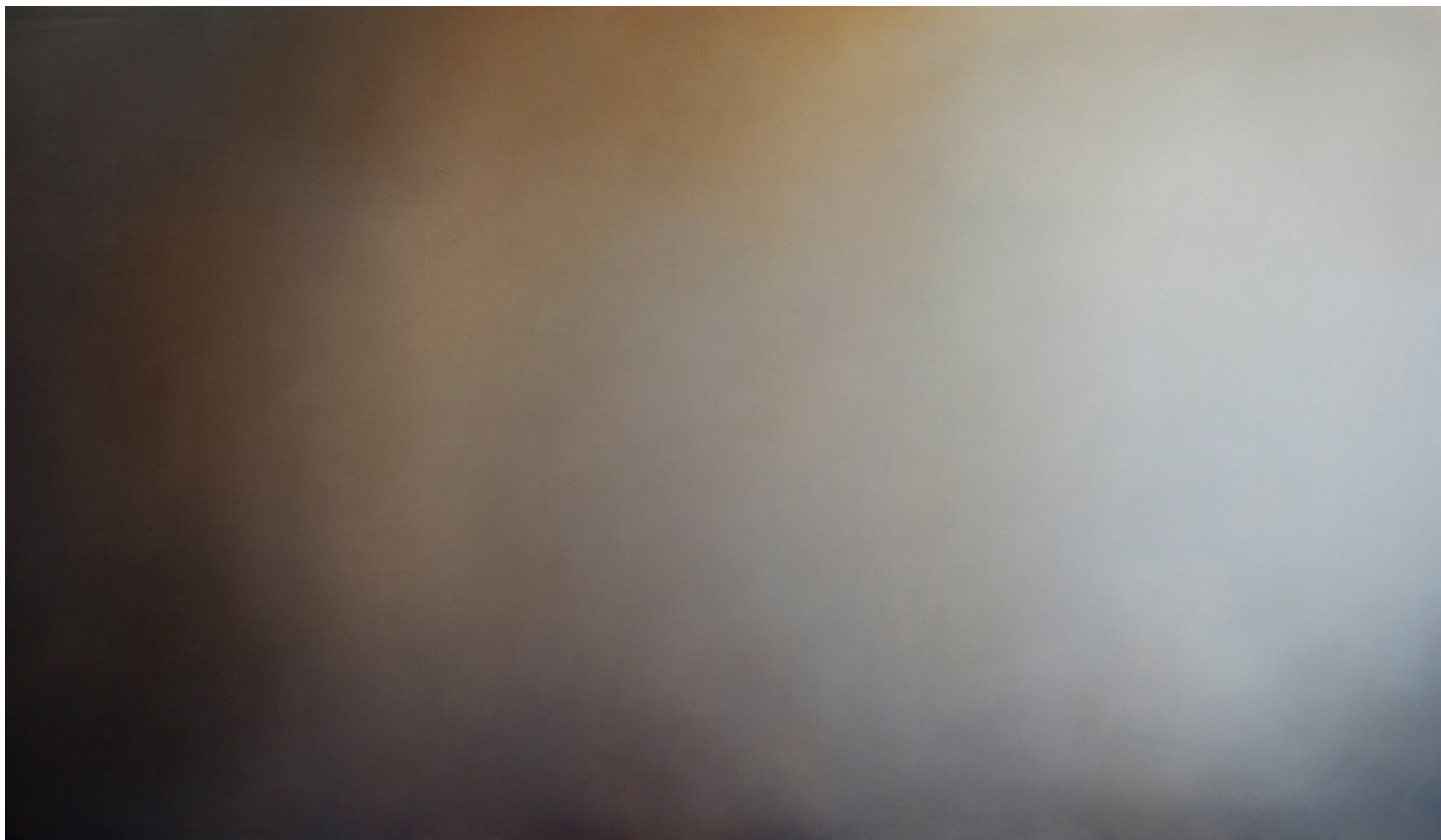
**Somnium (ix).** 2014, 183 x 214cm, Oil on linen



**Somnium (x).** 2014, 153 x 198cm, Oil on linen

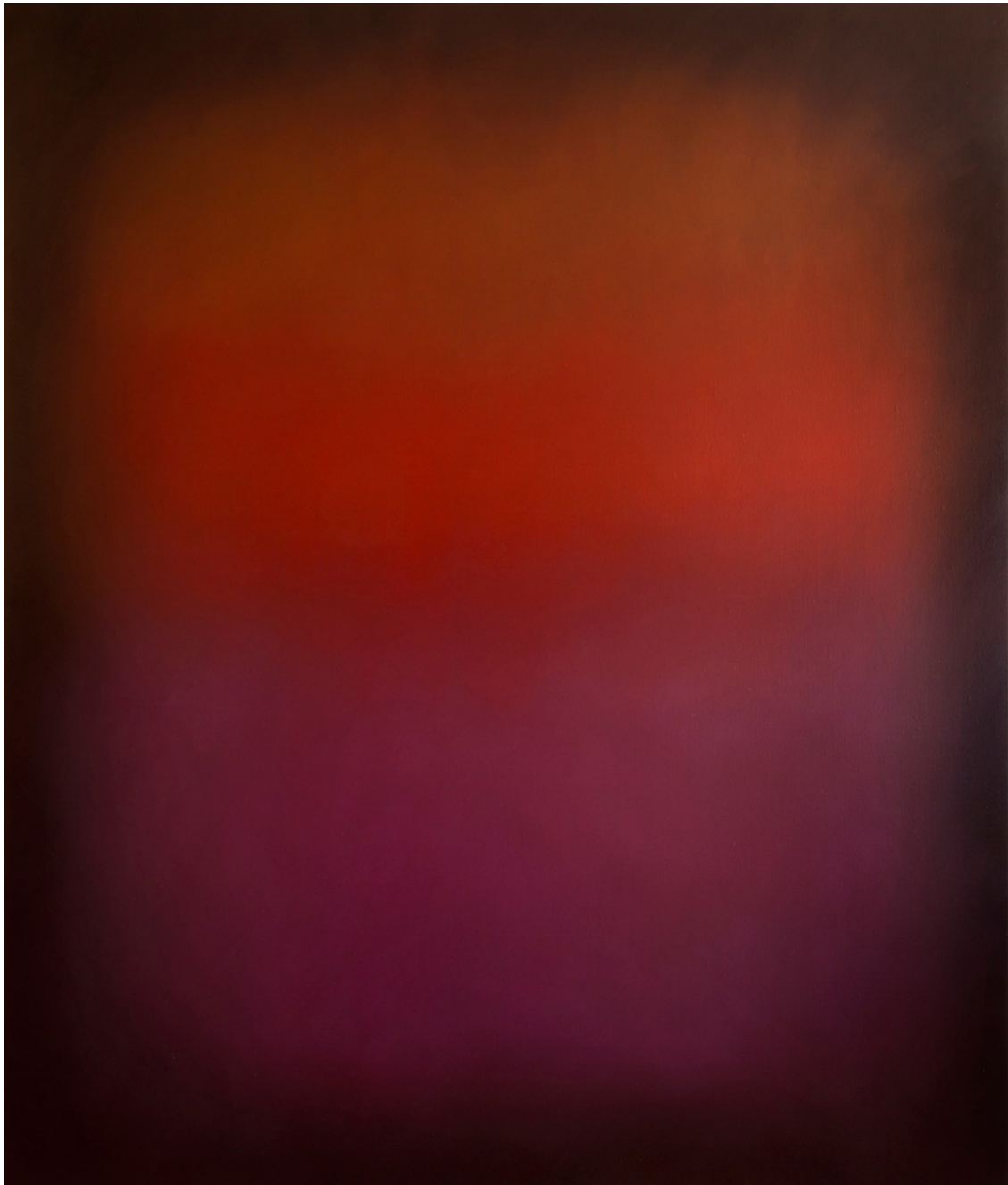


**Somnium (xiii).** 2014, 107 x 183cm, Oil on linen



**Somnium (xiv).** 2014, 107 x 183cm, Oil on linen





*Somnium (xvii).* 2014, 198 x 167cm, Oil on linen

*"We are asleep, our life is a dream. But we wake up, sometimes, just enough to know that we are dreaming."*

- Wittgenstein



Left to right: **Seek (x), (xv), (xxii)**. 2014, 89 x 70cm (framed), ink and pigment on watercolour paper



Left to right: **Seek (xx), (xxi), (xxiii)**. 2014, 89 x 70cm (framed), ink and pigment on watercolour paper





## Annie Hsiao-Wen Wang



### Spot81

81 Abercrombie Street  
Chippendale NSW 2008

### gallery hours

Wednesday to Sunday 11am-5pm

### director

Michelle Perry  
T: (02) 9690 0655  
M: 0410 426 886  
E: [info@spot81.com](mailto:info@spot81.com)  
W: [www.spot81.com](http://www.spot81.com)

Born in Taipei, 1979, and resident in Australia since 1990, Annie is a Melbourne-based artist and has been exhibiting throughout Australia since 2004. She has received several awards including the 2008 NAVA Ignition Prize, the 2009 Young Artists with Attitude Award, and was a finalist in the 2013 Wynne Prize and the 2014 Sulman Prize at the Art Gallery of New South Wales.

Her work has also been exhibited internationally in cities such as New York, Los Angeles, Miami, Hong Kong, and Taipei; and her art practice and exhibitions have been widely documented in both the Australian and international press. Many of her works are now held in public, private and corporate collections around the globe.

Wang draws inspiration from an array of philosophies from Kandinsky,

Buddhist meditation, and Chinese calligraphy and is interested in using paint to capture the intangible, the transcendental and the emotive; evoking a spiritual stillness that embraces the viewer in a contemplative moment.

Wang's paintings are born of the purity of silence, transcending the noise of reality. They give up their pleasures gradually, requiring many viewings, and allowing the abstract presence to emerge.

This body of work, *Somnium*, is about the liminal state between sleep and wakefulness; a state in which the subconscious is most prominent, and our deepest yearnings and fears come to light.